

The information in this document is subject to change without notice and should not be construed as a commitment by ABB. ABB assumes no responsibility for any errors that may appear in this document.

Except as may be expressly stated anywhere in this document, nothing herein shall be construed as any kind of guarantee or warranty by ABB for losses, damages to persons or property, fitness for a specific purpose or the like.

In no event shall ABB be liable for incidental or consequential damages arising from use of this document.

This document and parts thereof must not be reproduced or copied without ABB's written permission, and contents thereof must not be imparted to a third party nor be used for any unauthorized purpose. Contravention will be prosecuted.

Additional copies of this document may be obtained from ABB at its then current charge.

© Copyright 2018 ABB ALL right reserved.

ABB AB

SE-721 68 Västerås
Sweden

Latest revision:
ECO 98031, WI 182957
Sh 8.b (6) Connector XP41.2 renamed, adjusted.

Prepared by, date: EM, 180426 Approved by, date: JN, 180504



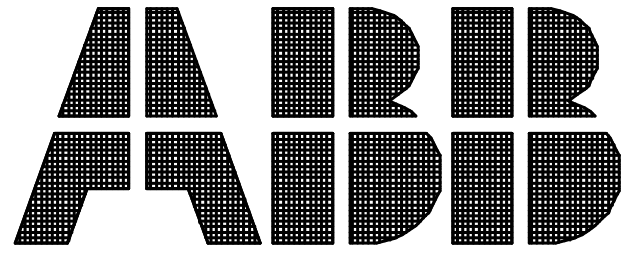
Lab/Office:
RMRO SE
PRIM

SERVICE DIAGRAM IRBP L.D 2009
COPYRIGHT PAGE

Status:
Approved

Plant: =
Location: +
Sublocation: +

Document no.	Rev. Ind	Page 1
3HAC035753-002	02	Next 2
		Total 14



Description : SERVICE DIAGRAM IRBP L.D 2009
 Drawing number : 3HAC035753-002
 Drawing version : 02
 Date : 2017-05-05

Customer :
 Year of construction :

Drawn by : AW/PR
 Number of pages : 14

We reserve all rights in this document and in the information contained therein. Reproduction, use or disclosure to third parties without express authority is strictly forbidden. © Copyright 2003 ABB

Latest revision:
 ECO 98031, WI 182957
 Sh 8.b (6) Connector XP41.2 renamed, adjusted.
 Prepared by, date: EM, 180426 Approved by, date: JN, 180504



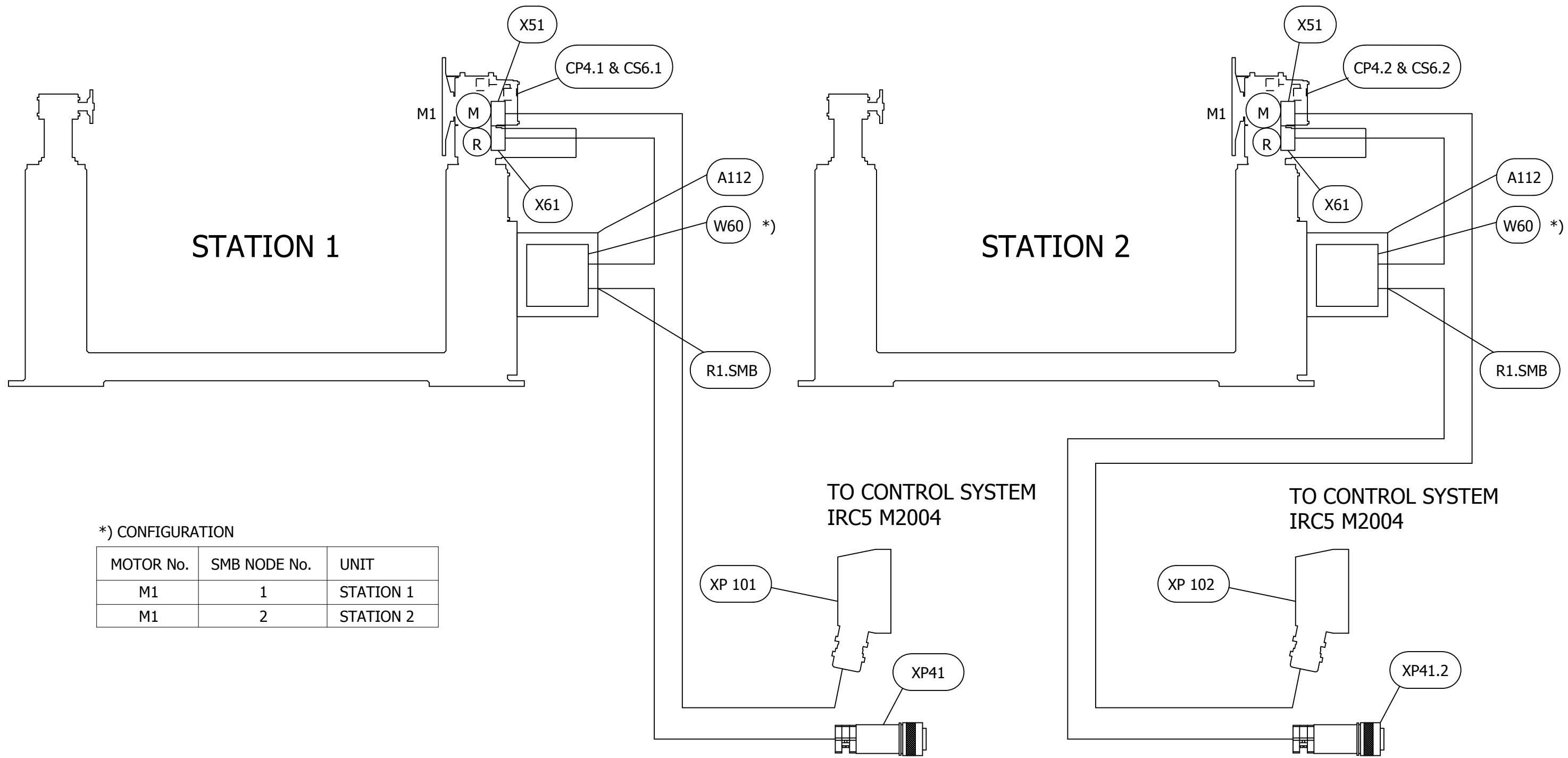
Lab/Office:
 RMRO SE
 PRIM

SERVICE DIAGRAM IRBP L.D 2009
 TITLE PAGE

Status: Approved
 Plant: =
 Location: +
 Sublocation: +

Document no.	Rev. Ind	Page 2
3HAC035753-002	02	Next 3
		Total 14

We reserve all rights in this document and in the information contained therein. Reproduction, use or disclosure to third parties without express authority is strictly forbidden. © Copyright 2003 ABB



*) CONFIGURATION

MOTOR No.	SMB NODE No.	UNIT
M1	1	STATION 1
M1	2	STATION 2

Latest revision:
 ECO 98031, WI 182957
 Sh 8.b (6) Connector XP41.2 renamed, adjusted.

Prepared by, date: EM, 180426 Approved by, date: JN, 180504



Lab/Office:
 RMRO SE
 PRIM

SERVICE DIAGRAM IRBP L.D 2009
 BLOCK DIAGRAM IRBP TYPE L

Status:
Approved

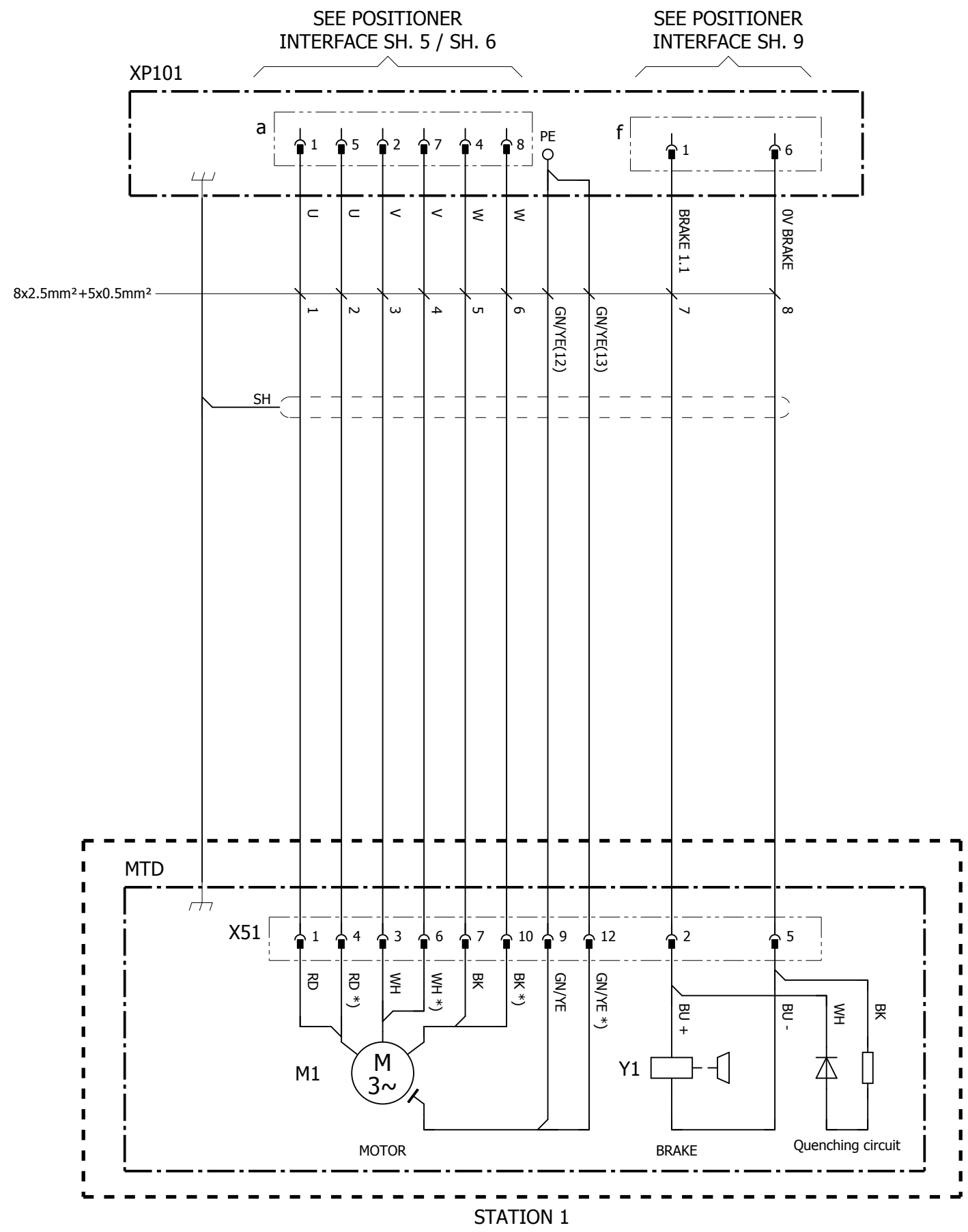
Plant: =
 Location: +
 Sublocation: +

Document no.
3HAC035753-002

Rev. Ind
02

Page 4
 Next 5
 Total 14

We reserve all rights in this document and in the information contained therein. Reproduction, use or disclosure to third parties without express authority is strictly forbidden. © Copyright 2003 ABB



*) ONLY CONNECTED IF MTD SIZE 5000.

Latest revision:
ECO 98031, WI 182957
Sh 8.b (6) Connector XP41.2 renamed, adjusted.

Prepared by, date: EM, 180426 Approved by, date: JN, 180504

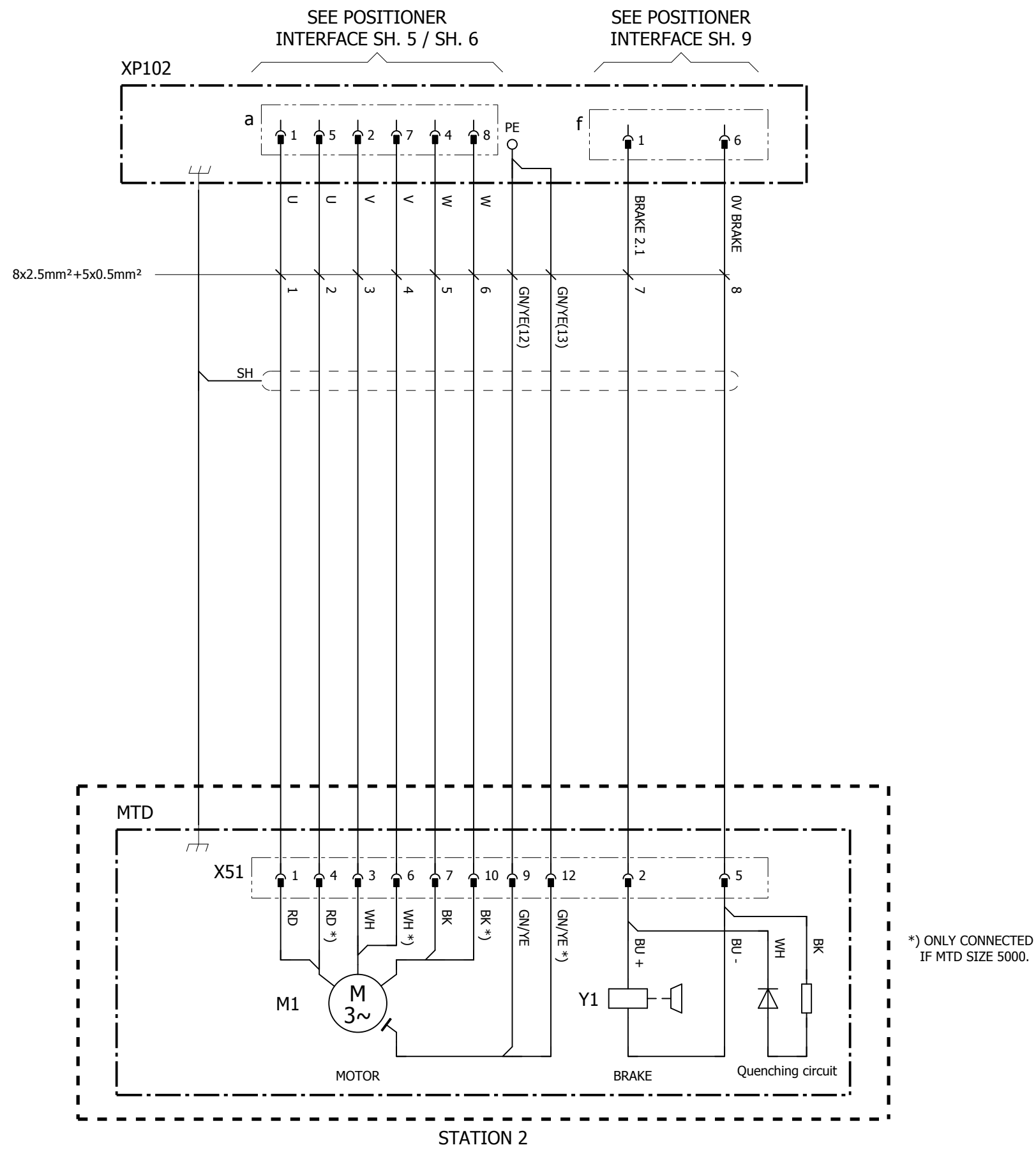


Lab/Office:
RMRO SE
PRIM

SERVICE DIAGRAM IRBP L.D 2009
MOTOR, STATION 1

Status: Approved	Plant: = Location: + Sublocation: +
Document no. 3HAC035753-002	Rev. Ind 02
	Page 5 Next 6 Total 14

We reserve all rights in this document and in the information contained therein. Reproduction, use or disclosure to third parties without express authority is strictly forbidden. © Copyright 2003 ABB



Latest revision:
ECO 98031, WI 182957
Sh 8.b (6) Connector XP41.2 renamed, adjusted.

Prepared by, date: EM, 180426 Approved by, date: JN, 180504



Lab/Office:
RMRO SE
PRIM

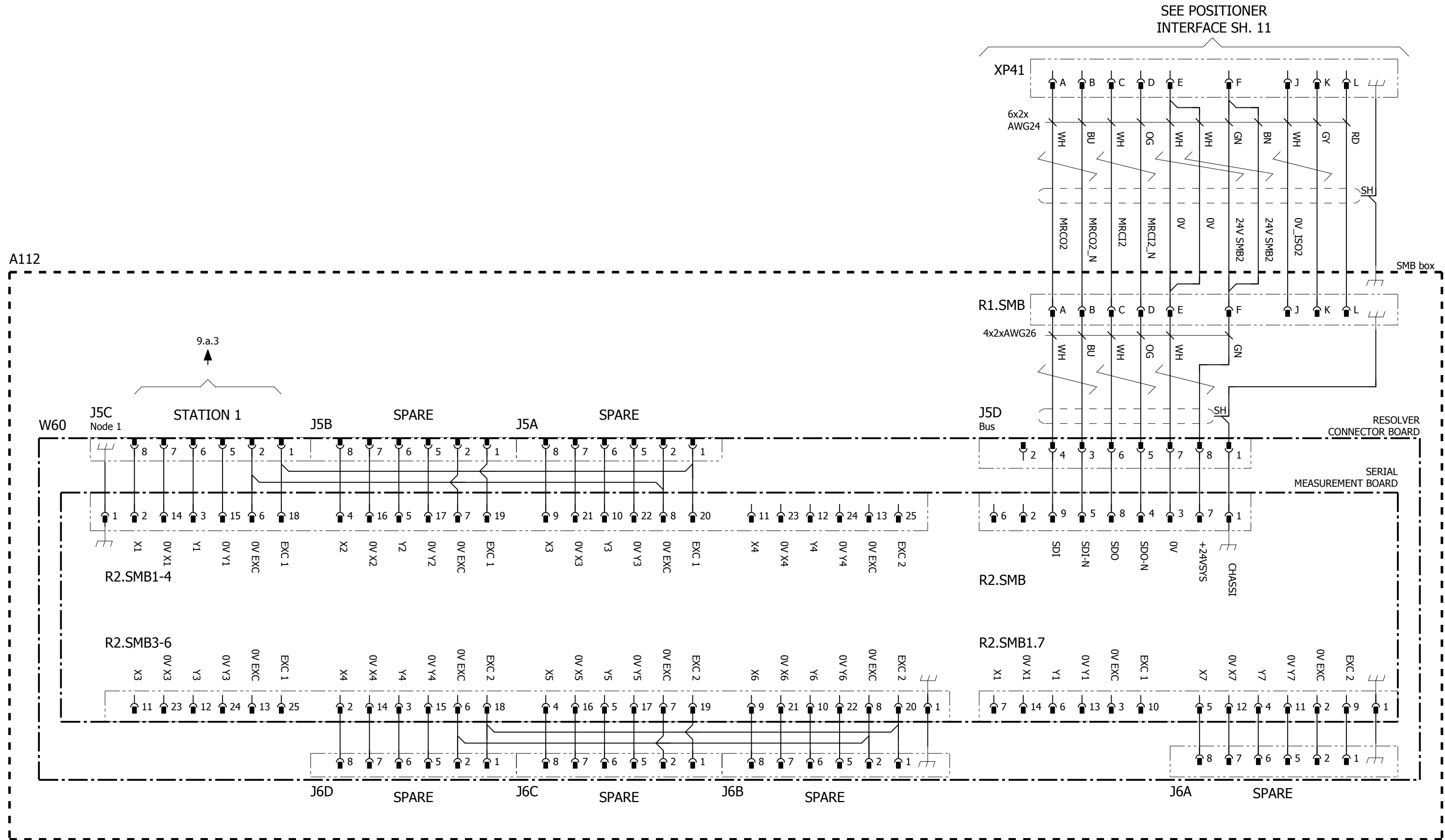
SERVICE DIAGRAM IRBP L.D 2009
MOTOR, STATION 2

Status:
Approved

Plant: =
Location: +
Sublocation: +

Document no.	Rev. Ind	Page 6
3HAC035753-002	02	Next 7.a
		Total 14

We reserve all rights in this document and in the information contained therein. Reproduction, use or disclosure to third parties without express authority is strictly forbidden. © Copyright 2003 ABB



SEE POSITIONER
INTERFACE SH. 11

A112

9.a.3

Latest revision:
ECO 98031, WI 182957
Sh 8.b (6) Connector XP41.2 renamed, adjusted.

Prepared by, date: EM, 180426 Approved by, date: JN, 180504



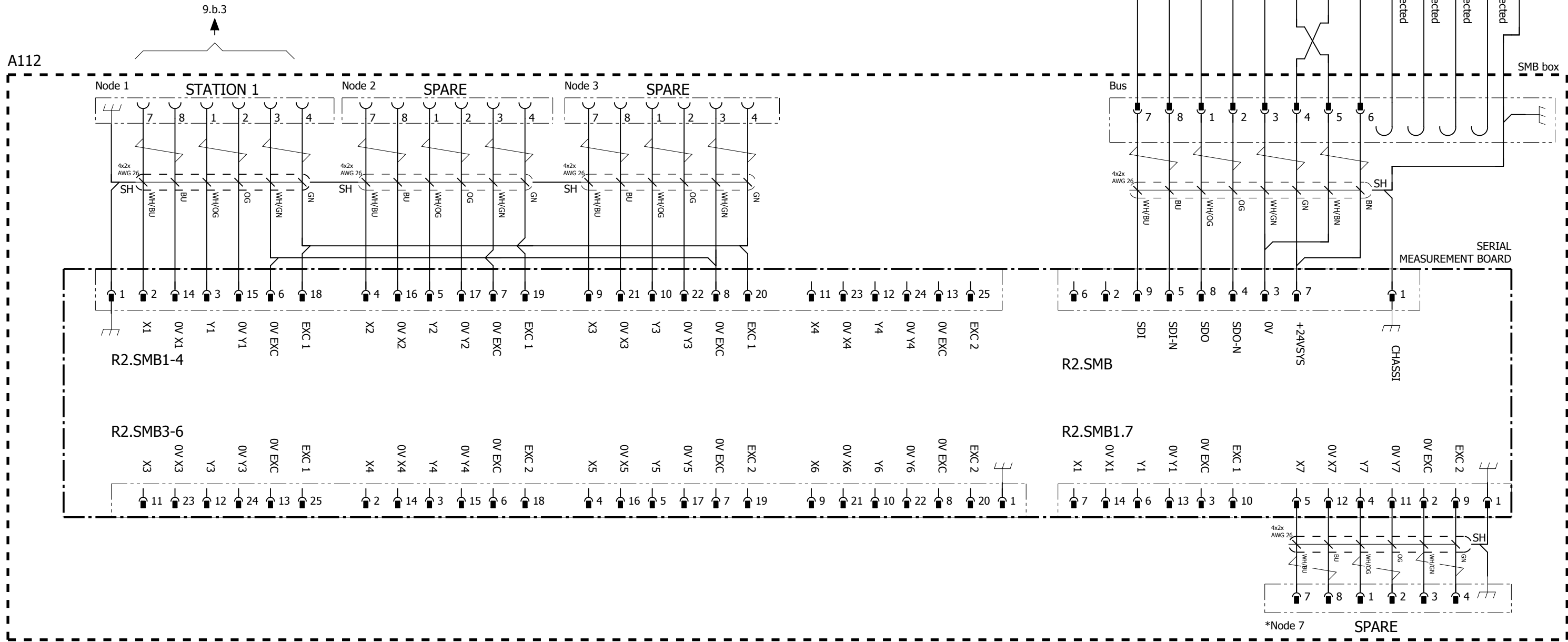
Lab/Office:
RMRO SE
PRIM

SERVICE DIAGRAM IRBP L.D 2009
RESOLVER CONNECTION BOX,
STATION 1, before release 17.1

Status: Approved
Document no. 3HAC035753-002
Rev. Ind 02
Plant: =
Location: +
Sublocation: +
Page 7.a
Next 7.b
Total 14

Notes:
 *Node 7 is only available on request.

SEE POSITIONER
 INTERFACE SH. 11



We reserve all rights in this document and in the information contained therein. Reproduction, use or disclosure to third parties without express authority is strictly forbidden. © Copyright 2003 ABB

Latest revision:
 ECO 98031, WI 182957
 Sh 8.b (6) Connector XP41.2 renamed, adjusted.
 Prepared by, date: EM, 180426 Approved by, date: JN, 180504

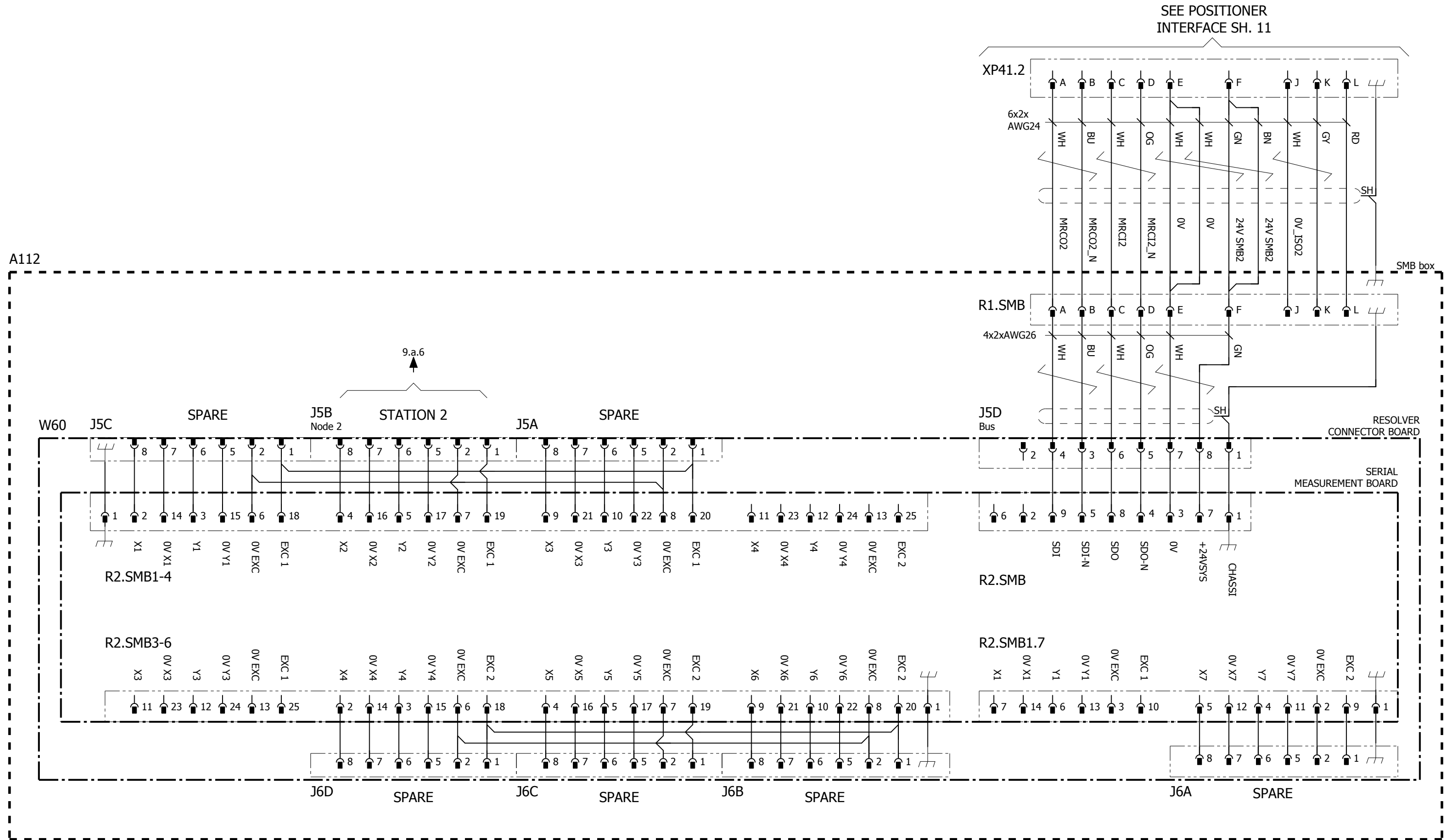


Lab/Office:
 RMRO SE
 PRIM

SERVICE DIAGRAM IRBP L.D 2009
 RESOLVER CONNECTION BOX
 STATION 1, after release 17.1

Status: Approved
 Document no. 3HAC035753-002
 Plant: =
 Location: +
 Sublocation: +
 Rev. Ind 02
 Page 7.b
 Next 8.a
 Total 14

We reserve all rights in this document and in the information contained therein. Reproduction, use or disclosure to third parties without express authority is strictly forbidden. © Copyright 2003 ABB



Latest revision:
ECO 98031, WI 182957
Sh 8.b (6) Connector XP41.2 renamed, adjusted.

Prepared by, date: EM, 180426 Approved by, date: JN, 180504



Lab/Office:
RMRO SE
PRIM

SERVICE DIAGRAM IRBP L.D 2009
RESOLVER CONNECTION BOX,
STATION 2, before release 17.1

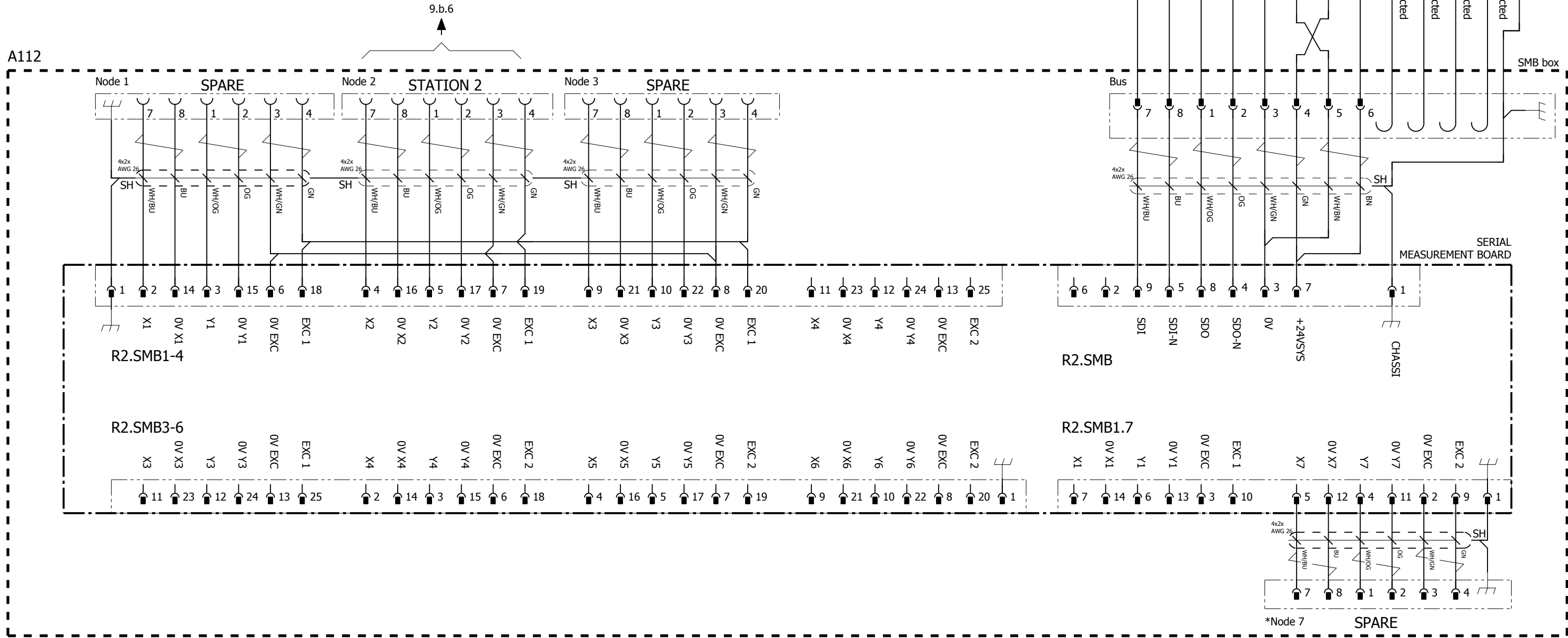
Status:
Approved

Plant: =
Location: +
Sublocation: +

Document no. 3HAC035753-002 Rev. Ind 02 Page 8.a
Next 8.b
Total 14

Notes:
 *Node 7 is only available on request.

SEE POSITIONER
 INTERFACE SH. 11



We reserve all rights in this document and in the information contained therein. Reproduction, use or disclosure to third parties without express authority is strictly forbidden. © Copyright 2003 ABB

Latest revision:
 ECO 98031, WI 182957
 Sh 8.b (6) Connector XP41.2 renamed, adjusted.

Prepared by, date: EM, 180426 Approved by, date: JN, 180504

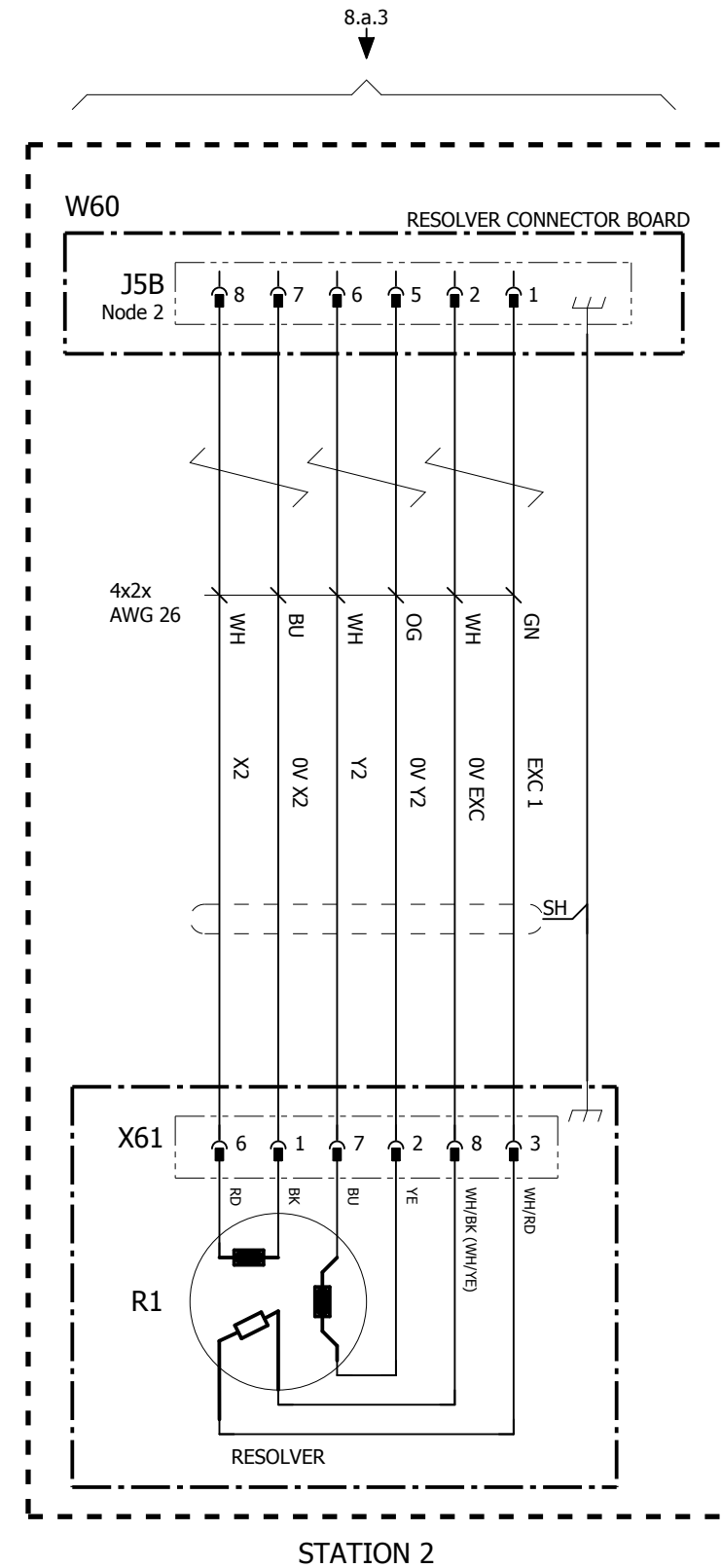
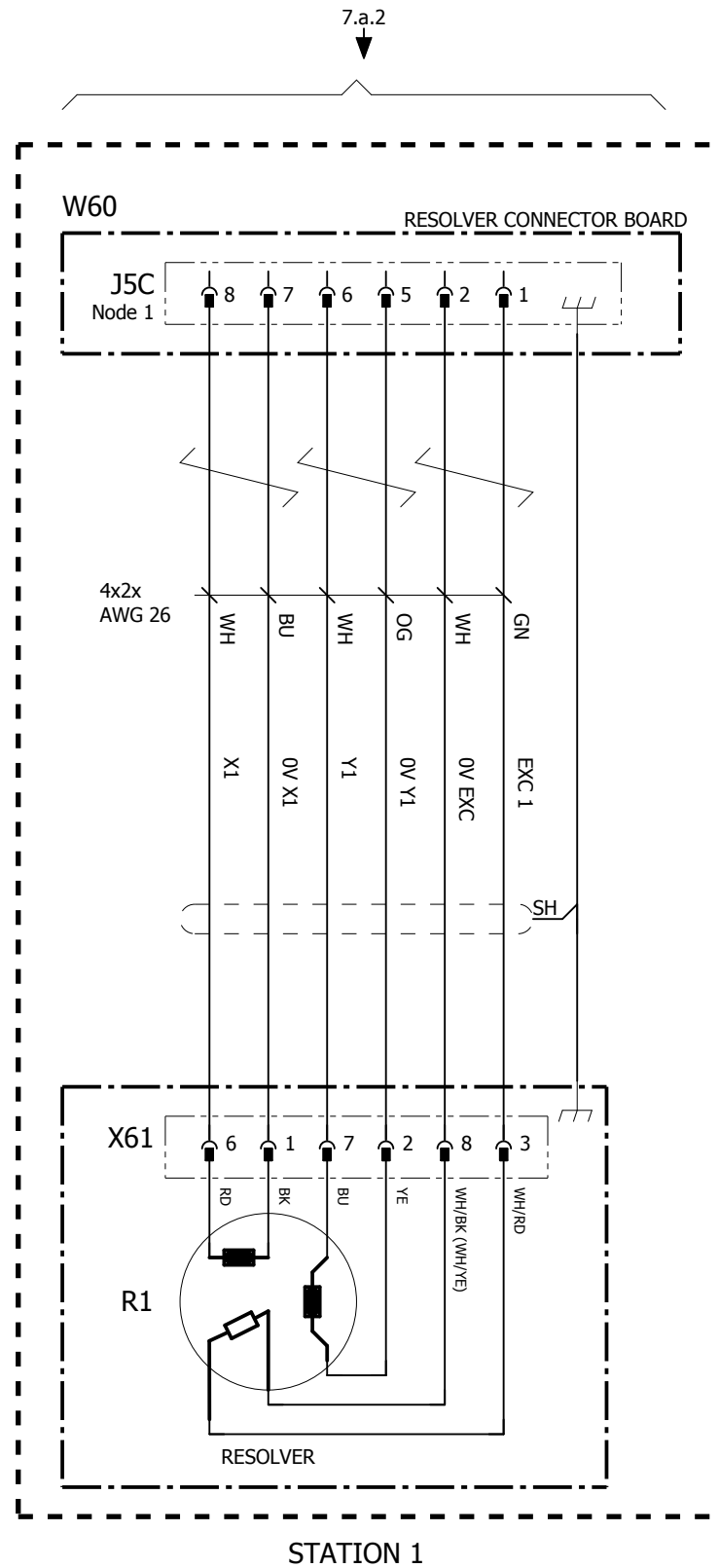


Lab/Office:
 RMRO SE
 PRIM

SERVICE DIAGRAM IRBP L.D 2009
 RESOLVER CONNECTION BOX
 STATION 2, after release 17.1

Status: Approved
 Document no. 3HAC035753-002
 Rev. Ind 02
 Plant: =
 Location: +
 Sublocation: +
 Page 8.b
 Next 9.a
 Total 14

We reserve all rights in this document and in the information contained therein. Reproduction, use or disclosure to third parties without express authority is strictly forbidden. © Copyright 2003 ABB



Latest revision:
ECO 98031, WI 182957
Sh 8.b (6) Connector XP41.2 renamed, adjusted.

Prepared by, date: EM, 180426 Approved by, date: JN, 180504

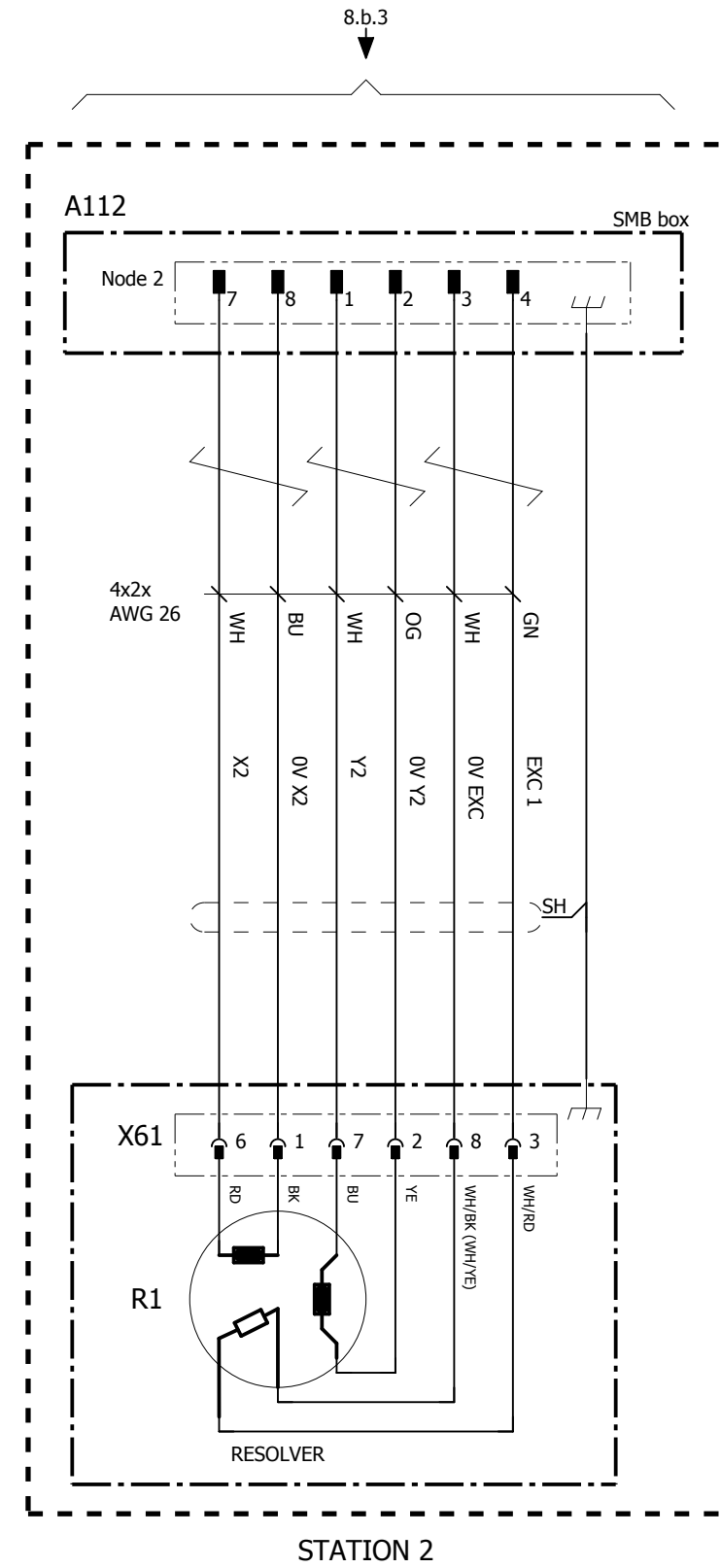
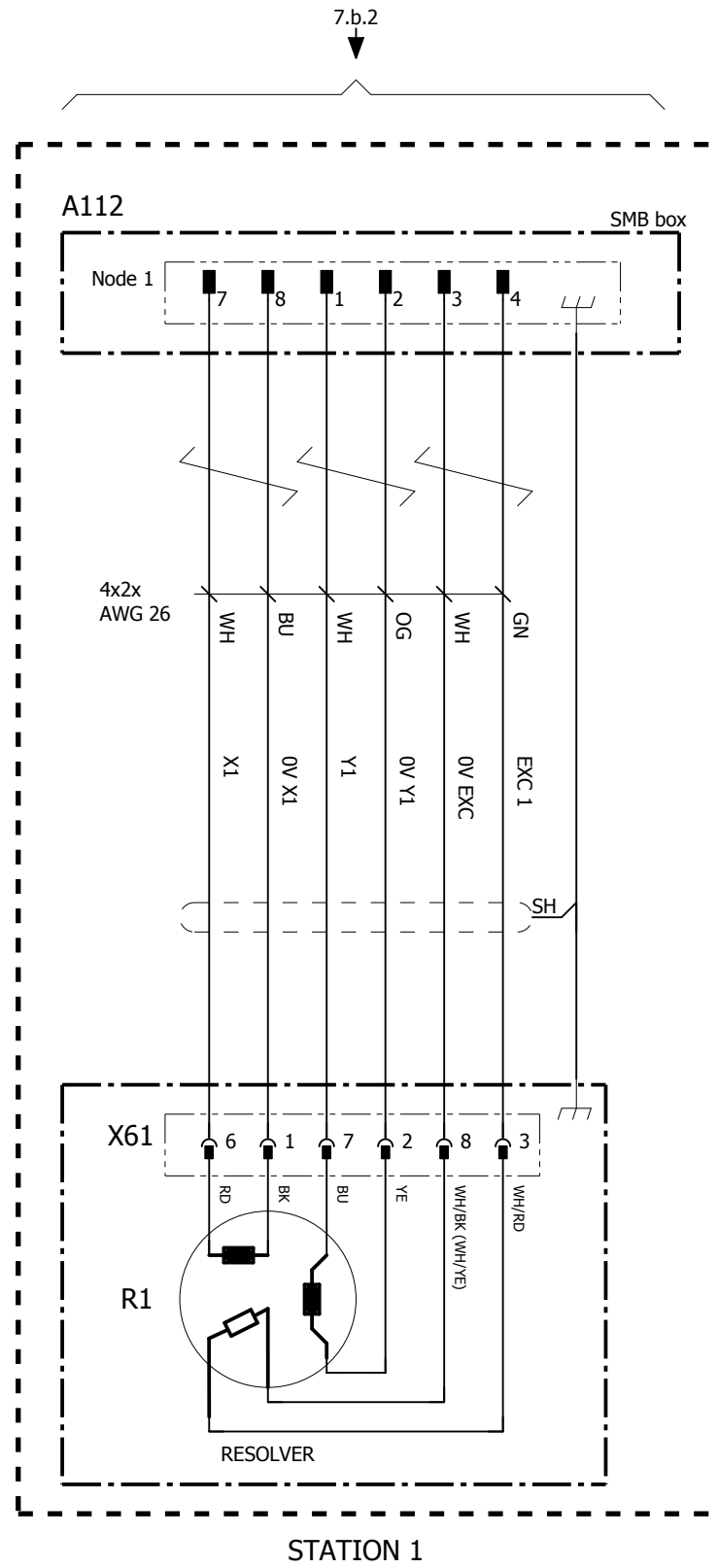
ABB Lab/Office:
RMRO SE
PRIM

SERVICE DIAGRAM IRBP L.D 2009
RESOLVERS
Before release 17.1

Status: Approved
Plant: =
Location: +
Sublocation: +

Document no. 3HAC035753-002 Rev. Ind 02 Page 9.a
Next 9.b
Total 14

We reserve all rights in this document and in the information contained therein. Reproduction, use or disclosure to third parties without express authority is strictly forbidden. © Copyright 2003 ABB



Latest revision:
ECO 98031, WI 182957
Sh 8.b (6) Connector XP41.2 renamed, adjusted.

Prepared by, date: EM, 180426 Approved by, date: JN, 180504

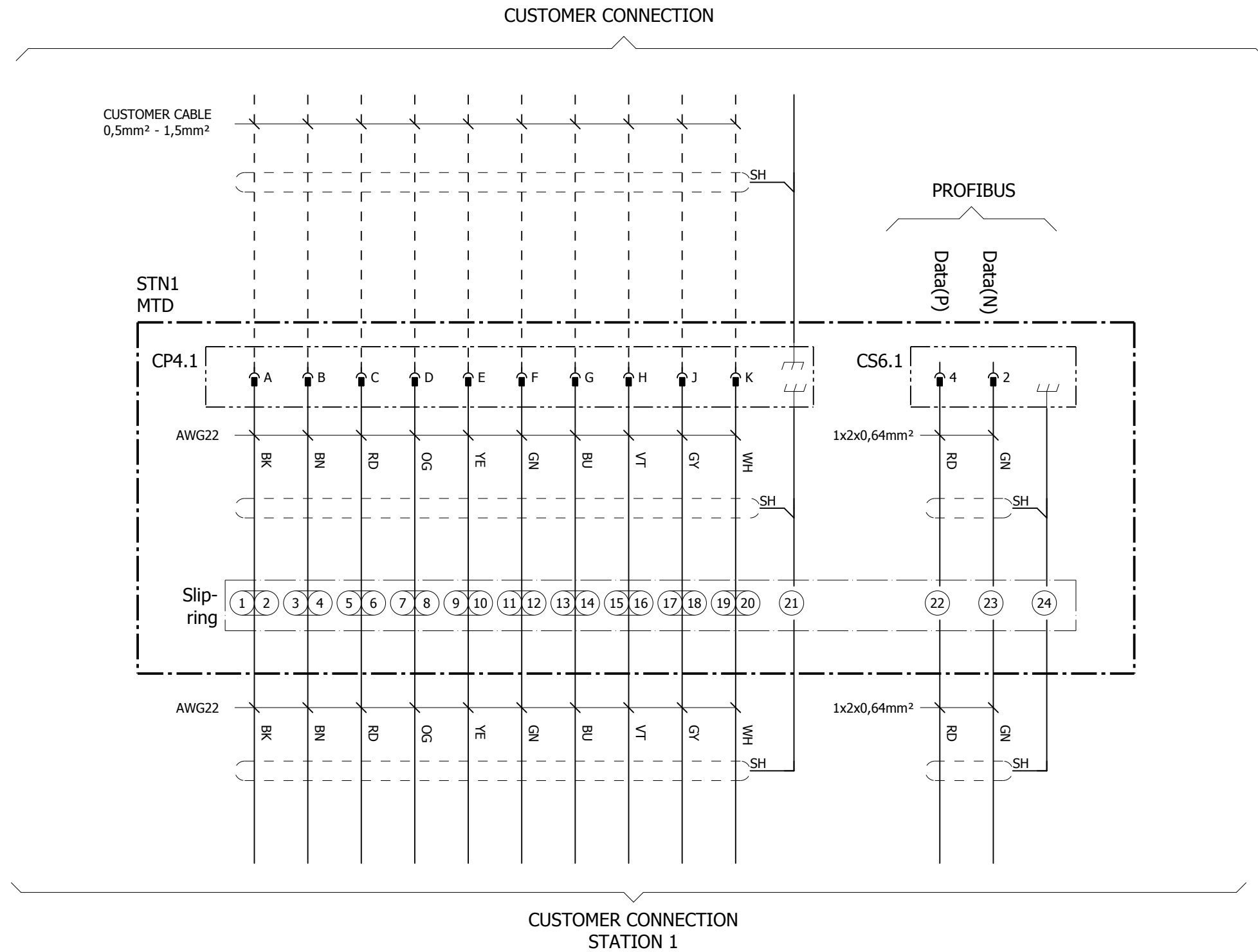
ABB Lab/Office:
RMRO SE
PRIM

SERVICE DIAGRAM IRBP L.D 2009
RESOLVERS
After release 17.1

Status: Approved
Plant: =
Location: +
Sublocation: +

Document no. 3HAC035753-002 Rev. Ind 02 Page 9.b
Next 10
Total 14

We reserve all rights in this document and in the information contained therein. Reproduction, use or disclosure to third parties without express authority is strictly forbidden. © Copyright 2003 ABB



Latest revision:
ECO 98031, WI 182957
Sh 8.b (6) Connector XP41.2 renamed, adjusted.

Prepared by, date: EM, 180426 Approved by, date: JN, 180504

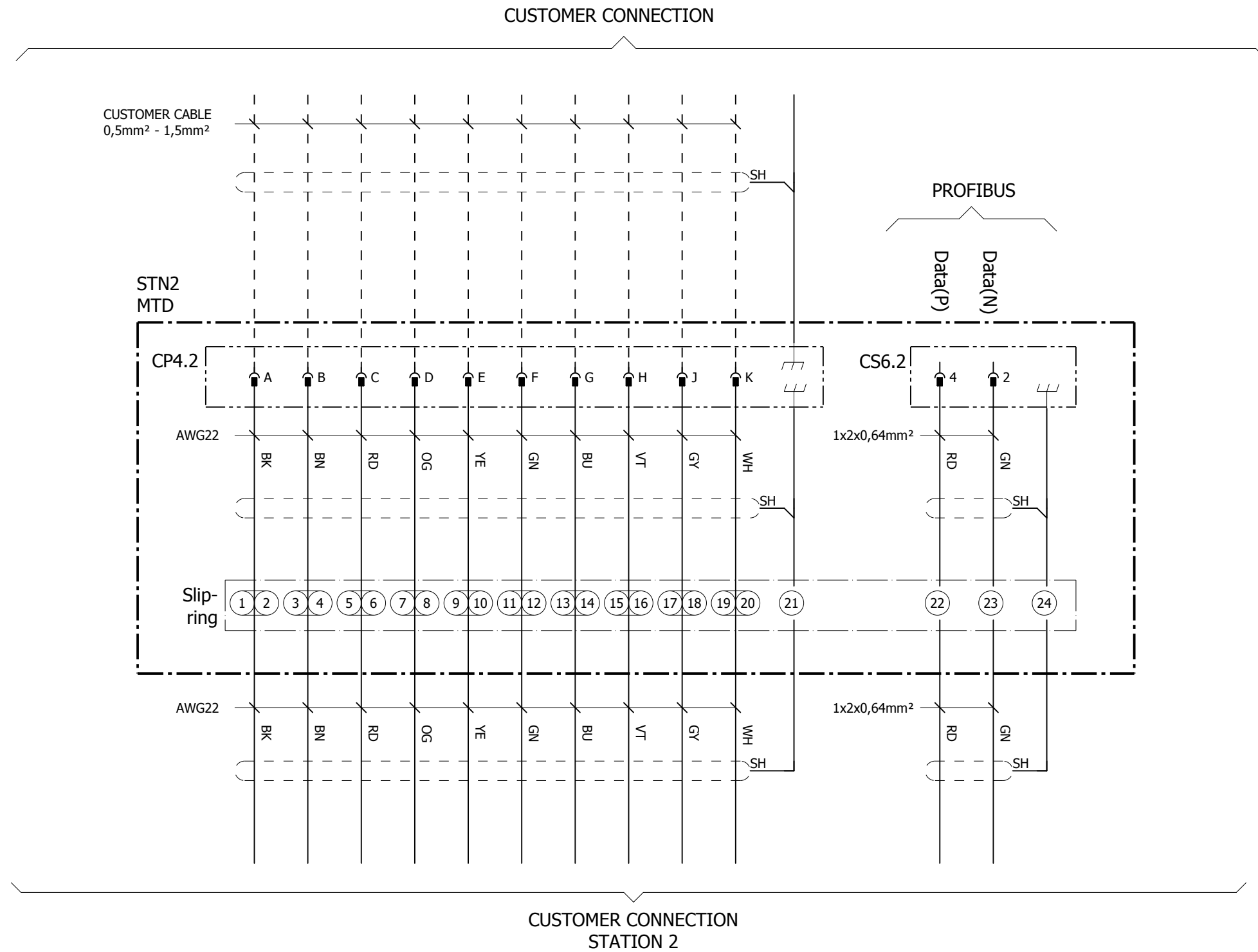


Lab/Office:
RMRO SE
PRIM

SERVICE DIAGRAM IRBP L.D 2009
OPTION SLIPRING DEVICE,
STATION 1

Status: Approved	Plant: = Location: + Sublocation: +
Document no. 3HAC035753-002	Rev. Ind 02
	Page 10 Next 11 Total 14

We reserve all rights in this document and in the information contained therein. Reproduction, use or disclosure to third parties without express authority is strictly forbidden. © Copyright 2003 ABB



Latest revision:
ECO 98031, WI 182957
Sh 8.b (6) Connector XP41.2 renamed, adjusted.

Prepared by, date: EM, 180426 Approved by, date: JN, 180504



Lab/Office:
RMRO SE
PRIM

SERVICE DIAGRAM IRBP L.D 2009
OPTION SLIPRING DEVICE,
STATION 2

Status: Approved	Plant: = Location: + Sublocation: +
Document no. 3HAC035753-002	Rev. Ind 02
	Page 11 Next Total 14